



Cattle on Feed

ISSN: 1948-9080

Released September 23, 2011, by the National Agricultural Statistics Service (NASS), Agricultural Statistics Board, United States Department of Agriculture (USDA).

United States Cattle on Feed Up 5 Percent

Cattle and calves on feed for slaughter market in the United States for feedlots with capacity of 1,000 or more head totaled 10.7 million head on September 1, 2011. The inventory was 5 percent above September 1, 2010. This is the third highest September 1 inventory since the series began in 1996.

Placements in feedlots during August totaled 2.25 million, 1 percent below 2010. Net placements were 2.18 million head. During August, placements of cattle and calves weighing less than 600 pounds were 715,000, 600-699 pounds were 370,000, 700-799 pounds were 477,000, and 800 pounds and greater were 690,000.

Marketings of fed cattle during August totaled 2.05 million, 7 percent above 2010.

Other disappearance totaled 72,000 during August, 53 percent above 2010.

Number of Cattle on Feed, Placements, Marketings, and Other Disappearance on 1,000+ Capacity Feedlots – United States: September 1, 2010 and 2011

Item	Number		Percent of previous year
	2010	2011	
	(1,000 head)	(1,000 head)	(percent)
On feed August 1	9,880	10,589	107
Placed on feed during August	2,271	2,252	99
Fed cattle marketed during August	1,923	2,048	107
Other disappearance during August	47	72	153
On feed September 1	10,181	10,721	105

Number of Cattle on Feed, Placements, Marketings, and Other Disappearance on 1,000+ Capacity Feedlots – United States: August 1, 2010 and 2011

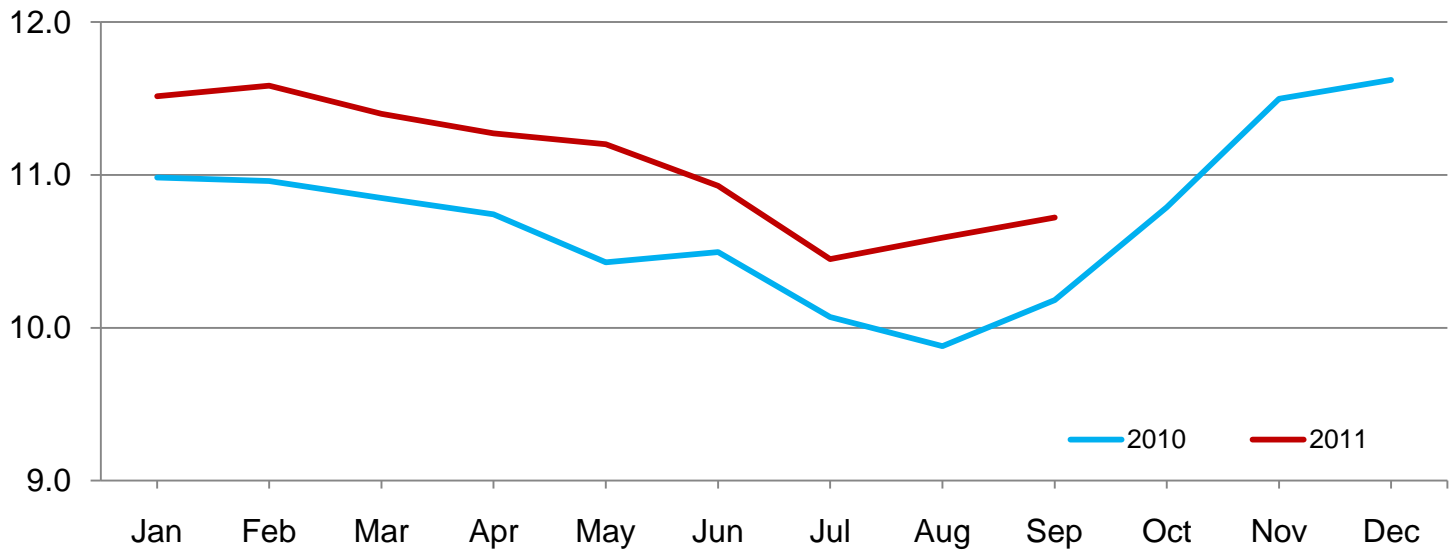
Item	Number		Percent of previous year
	2010	2011	
	(1,000 head)	(1,000 head)	(percent)
On feed July 1	10,071	10,448	104
Placed on feed during July	1,758	2,133	121
Fed cattle marketed during July	1,901	1,911	101
Other disappearance during July	48	81	169
On feed August 1	9,880	10,589	107

Number of Cattle on Feed on 1,000+ Capacity Feedlots by Month – States and United States: 2010 and 2011

State	September 1, 2010	August 1, 2011	September 1, 2011		
			Number	Percent of previous year	Percent of previous month
	(1,000 head)	(1,000 head)	(1,000 head)	(percent)	(percent)
Arizona	240	287	288	120	100
California	435	480	475	109	99
Colorado	890	970	990	111	102
Idaho	190	195	195	103	100
Iowa	560	560	550	98	98
Kansas	2,200	2,180	2,210	100	101
Nebraska	2,050	1,980	2,010	98	102
Oklahoma	355	360	365	103	101
South Dakota	195	195	190	97	97
Texas	2,550	2,840	2,900	114	102
Washington	170	190	193	114	102
Other States	346	352	355	103	101
United States	10,181	10,589	10,721	105	101

Cattle on Feed Inventory on 1,000+ Capacity Feedlots – United States

Million head

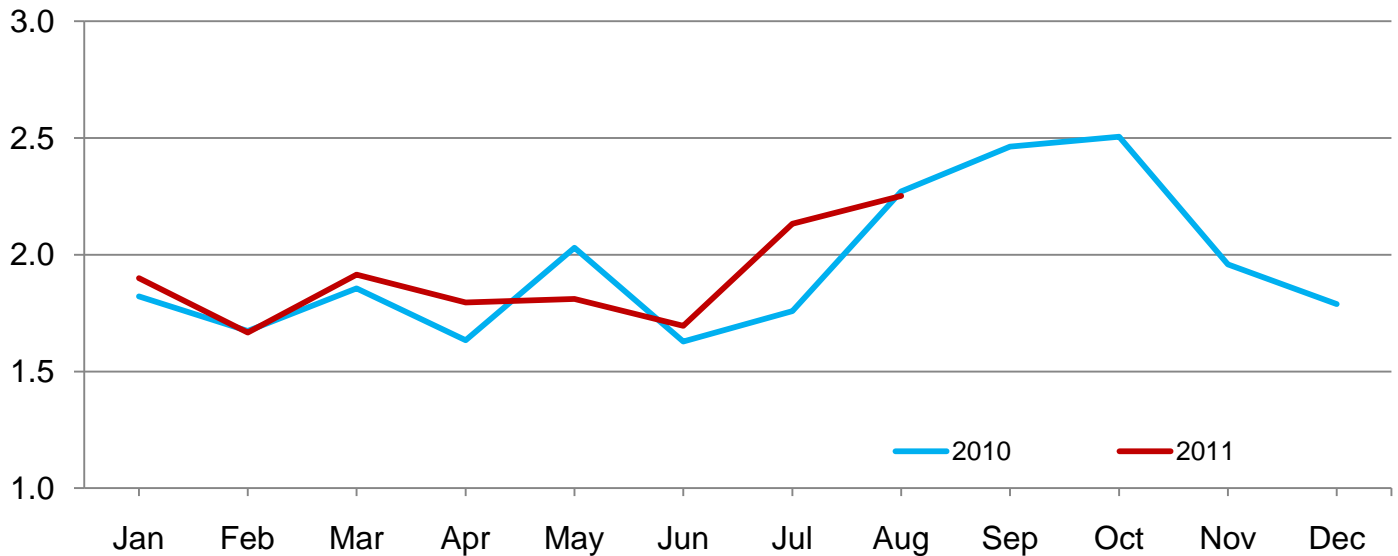


Number of Cattle Placed on Feed on 1,000+ Capacity Feedlots by Month – States and United States: 2010 and 2011

State	During August 2010	During July 2011	During August 2011		
			Number	Percent of previous year	Percent of previous month
	(1,000 head)	(1,000 head)	(1,000 head)	(percent)	(percent)
Arizona	20	24	25	125	104
California	55	62	56	102	90
Colorado	190	170	230	121	135
Idaho	46	24	43	93	179
Iowa	93	60	84	90	140
Kansas	610	580	520	85	90
Nebraska	480	390	445	93	114
Oklahoma	81	86	75	93	87
South Dakota	45	22	45	100	205
Texas	540	630	620	115	98
Washington	42	42	48	114	114
Other States	69	43	61	88	142
United States	2,271	2,133	2,252	99	106

Number of Cattle Placed on 1,000+ Capacity Feedlots – United States

Million head



Number of Cattle Placed on Feed by Weight Group on 1,000+ Capacity Feedlots by Month – States and United States: 2010 and 2011

State	During August									
	Under 600 lbs		600-699 lbs		700-799 lbs		800+ lbs		Total	
	2010	2011	2010	2011	2010	2011	2010	2011	2010	2011
	(1,000 head)	(1,000 head)	(1,000 head)	(1,000 head)	(1,000 head)	(1,000 head)	(1,000 head)	(1,000 head)	(1,000 head)	(1,000 head)
Colorado	25	45	20	30	55	45	90	110	190	230
Kansas	90	105	115	105	200	165	205	145	610	520
Nebraska	55	90	80	65	100	100	245	190	480	445
Texas	215	365	120	115	120	85	85	55	540	620
Other States	110	110	60	55	91	82	190	190	451	437
United States	495	715	395	370	566	477	815	690	2,271	2,252

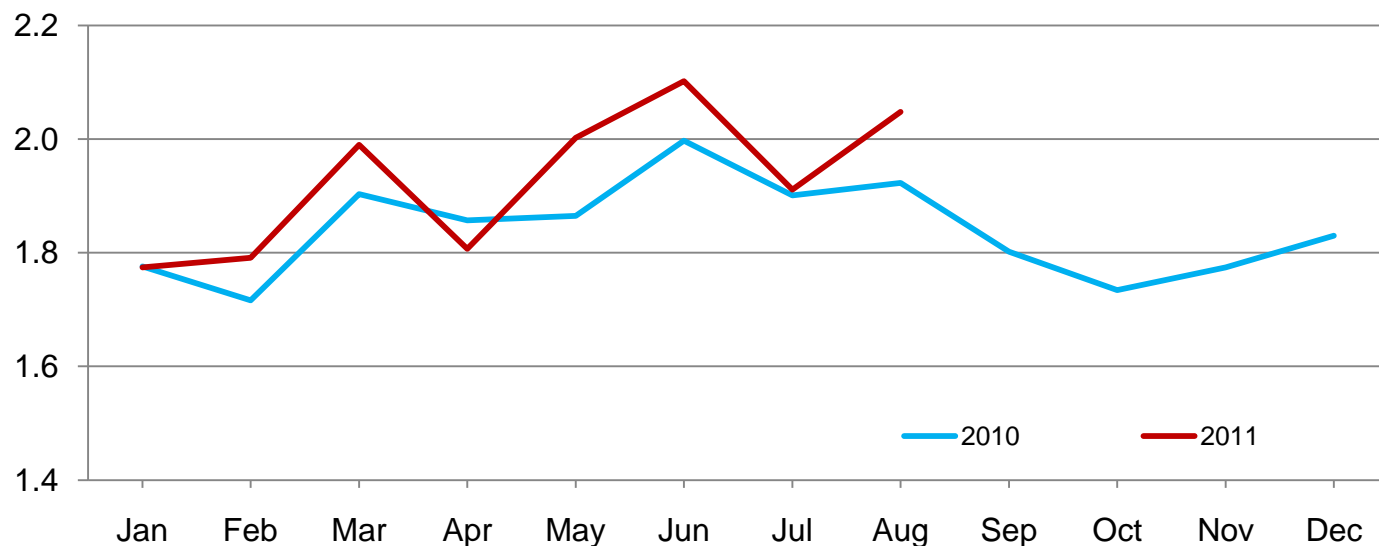
State	During July									
	Under 600 lbs		600-699 lbs		700-799 lbs		800+ lbs		Total	
	2010	2011	2010	2011	2010	2011	2010	2011	2010	2011
	(1,000 head)	(1,000 head)	(1,000 head)	(1,000 head)	(1,000 head)	(1,000 head)	(1,000 head)	(1,000 head)	(1,000 head)	(1,000 head)
Colorado	15	45	20	25	40	40	65	60	140	170
Kansas	75	95	90	115	165	190	170	180	500	580
Nebraska	50	60	70	70	90	100	160	160	370	390
Texas	190	300	75	140	85	95	60	95	410	630
Other States	85	120	50	50	68	68	135	125	338	363
United States	415	620	305	400	448	493	590	620	1,758	2,133

Number of Cattle Marketed on 1,000+ Capacity Feedlots by Month – States and United States: 2010 and 2011

State	During August 2010	During July 2011	During August 2011		
			Number	Percent of previous year	Percent of previous month
			(1,000 head)	(percent)	(percent)
Arizona	27	23	23	85	100
California	52	48	56	108	117
Colorado	185	195	205	111	105
Idaho	45	41	42	93	102
Iowa	91	88	92	101	105
Kansas	440	420	475	108	113
Nebraska	380	415	400	105	96
Oklahoma	60	74	67	112	91
South Dakota	49	35	48	98	137
Texas	500	465	540	108	116
Washington	34	44	44	129	100
Other States	60	63	56	93	89
United States	1,923	1,911	2,048	107	107

Number of Cattle Marketed on 1,000+ Capacity Feedlots – United States

Million head



Other Disappearance on 1,000+ Capacity Feedlots by Month – States and United States: 2010 and 2011

State	During August 2010 (1,000 head)	During July 2011 (1,000 head)	During August 2011		
			Number (1,000 head)	Percent of previous year (percent)	Percent of previous month (percent)
Arizona	1	1	1	100	100
California	3	4	5	167	125
Colorado	5	5	5	100	100
Idaho	1	3	1	100	33
Iowa	2	2	2	100	100
Kansas	10	10	15	150	150
Nebraska	10	15	15	150	100
Oklahoma	1	2	3	300	150
South Dakota	1	2	2	200	100
Texas	10	25	20	200	80
Washington	1	5	1	100	20
Other States	2	7	2	100	29
United States	47	81	72	153	89

Terms and Definitions of Cattle on Feed Estimates

Cattle on feed are animals being fed a ration of grain, silage, hay and/or protein supplement for slaughter market that are expected to produce a carcass that will grade select or better. It excludes cattle being "backgrounded only" for later sale as feeders or later placement in another feedlot.

Placements are cattle put into a feedlot, fed a ration which will produce a carcass that will grade select or better, and are intended for the slaughter market.

Marketings are cattle shipped out of feedlots to a slaughter market.

Other disappearance includes death loss, movement from feedlots to pasture, and shipments to other feedlots for further feeding.

Reliability of Cattle on Feed Estimates

Survey Procedures: During January and July all known feedlots in the United States with capacity of 1,000 or more head are surveyed to provide data for cattle on feed estimates. During the other months, all known feedlots from 16 States are surveyed. The 16 States account for approximately 98 percent of the cattle on feed in feedlots with capacity of 1,000 or more head. Individual State estimates are published monthly for 11 of the 16 States. Data collected from the remaining 5 States are used to establish the "Other States" estimates. These 5 States include Illinois, Minnesota, New Mexico, Oregon, and Wyoming. The "Other States" category represents all cattle on feed with a capacity of 1,000 or more head for the rest of the United States.

Estimating Procedures: These cattle on feed estimates were prepared by the Agricultural Statistics Board after reviewing recommendations and analysis submitted by each State office. Regional and State survey data were reviewed for reasonableness with each other and with estimates from the previous month when establishing the current estimates.

Revision Policy: Revisions to previous estimates are made to improve month to month relationships. Estimates for the previous month are subject to revision in all States each month when current estimates are made. In February, all monthly estimates for the previous year, and the number of feedlots and annual marketings from two years ago are reviewed and subject to revisions. The reviews are primarily based on slaughter data, state check-off or brand data, and any other data that may have been received after the original estimate was made. Estimates will also be reviewed after data from the Census of Agriculture are available. No revisions will be made after that date and estimates become final.

Reliability: Since all 1,000+ capacity cattle on feed operators in every State are not included in the monthly survey, survey estimates are subject to sampling variability. Survey results are also subject to non-sampling errors such as omissions, duplications, and mistakes in reporting, recording, and processing the data. The effects of these errors cannot be measured directly. They are minimized through rigid quality controls in the data collection process and through a careful review of all reported data for consistency and reasonableness.

To assist users in evaluating the reliability of estimates in this report, the "**Root Mean Square Error**" is shown for selected items in the table on the following page. The "Root Mean Square Error" is a statistical measure based on past performance and is computed using the differences between first and latest estimates. The "Root Mean Square Error" for cattle on feed inventory estimates over the past 24 months is 0.1 percent. This means that chances are 2 out of 3 that the final estimate will not be above or below the current estimate of 10.7 million head by more than 0.1 percent. Chances are 9 out of 10 that the difference will not exceed 0.2 percent.

The table on the following page shows a 24 month record of the range of differences between first and latest estimates for selected items. Using estimates of number on feed as an example, changes between the first estimate and the latest estimate during the past 24 months have averaged 11,000 head, ranging from 0 to 37,000 head. During this period the initial estimate has been above the latest estimate 10 times and has been below the latest estimate 10 times. This does not imply that the initial estimate is likely to understate or overstate final inventory.

Reliability of Monthly Cattle on Feed Estimates

[Based on data for the past 24 months]

Item	Root mean square error	90 percent confidence level	Difference between first and latest estimate				
			Average	Smallest	Largest	Months	
						Below latest	Above latest
	(percent)	(percent)	(1,000)	(1,000)	(1,000)	(number)	(number)
Number on feed	0.1	0.2	11	0	37	10	10
Placements	0.4	0.7	4	0	20	11	7
Marketings	0.3	0.5	3	0	21	9	6

Information Contacts

Listed below are the commodity specialists in the Livestock Branch of the National Agricultural Statistics Service to contact for additional information. E-mail inquiries may be sent to nass@nass.usda.gov

Dan Kerestes, Chief, Livestock Branch	(202) 720-3570
Scott Hollis, Head, Livestock Section	(202) 690-2424
Travis Averill – Dairy Products Prices	(202) 690-2168
Sherry Bertramsen – Livestock Slaughter	(515) 284-4340
Doug Bounds – Hogs and Pigs	(202) 720-3106
Jason Hardegree – Cattle, Cattle on Feed	(202) 720-3040
Mike Miller – Milk Production and Milk Cows	(202) 720-3278
Everett Olbert – Sheep and Goats	(202) 720-4751
Lorie Warren – Dairy Products	(202) 690-3236

Access to NASS Reports

For your convenience, you may access NASS reports and products the following ways:

- All reports are available electronically, at no cost, on the NASS web site: <http://www.nass.usda.gov>
- Both national and state specific reports are available via a free e-mail subscription. To set-up this free subscription, visit <http://www.nass.usda.gov> and in the “Receive NASS Updates” box under “Receive reports by Email,” click on “National” or “State” to select the reports you would like to receive.
- Printed reports may be purchased from the National Technical Information Service (NTIS) by calling toll-free (800) 999-6779, or (703) 605-6220 if calling from outside the United States or Canada. Accepted methods of payment are Visa, MasterCard, check, or money order.

For more information on NASS surveys and reports, call the NASS Agricultural Statistics Hotline at (800) 727-9540, 7:30 a.m. to 4:00 p.m. ET, or e-mail: nass@nass.usda.gov.

The United States Department of Agriculture (USDA) prohibits discrimination in all its programs and activities on the basis of race, color, national origin, age, disability, and where applicable, sex, marital status, familial status, parental status, religion, sexual orientation, political beliefs, genetic information, reprisal, or because all or a part of an individual's income is derived from any public assistance program. (Not all prohibited bases apply to all programs.) Persons with disabilities who require alternative means for communication of program information (Braille, large print, audiotape, etc.) should contact USDA's TARGET Center at (202) 720-2600 (voice and TDD).

To file a complaint of discrimination, write to USDA, Assistant Secretary for Civil Rights, Office of the Assistant Secretary for Civil Rights, 1400 Independence Avenue, S.W., Stop 9410, Washington, DC 20250-9410, or call toll-free at (866) 632-9992 (English) or (800) 877-8339 (TDD) or (866) 377-8642 (English Federal-relay) or (800) 845-6136 (Spanish Federal-relay). USDA is an equal opportunity provider and employer.

USDA Data Users' Meeting
Monday October 17, 2011

Crowne Plaza Chicago-Metro
Chicago, Illinois 60661
312-829-5000

The USDA's National Agricultural Statistics Service will be organizing an open forum for data users. The purpose will be to provide updates on pending changes in the various statistical and information programs and seek comments and input from data users. Other USDA agencies to be represented will include the Agricultural Marketing Service, the Economic Research Service, the Foreign Agricultural Service, and the World Agricultural Outlook Board. The Foreign Trade Division from the Census Bureau will also be included in the meeting.

For registration details or additional information for the Data Users' Meeting, see the NASS homepage at <http://www.nass.usda.gov/meeting/> or contact Marie Jordan (NASS) at 202-690-8141 or at marie_jordan@nass.usda.gov.

This Data Users' Meeting precedes an Industry Outlook Meeting that will be held at the same location on Tuesday October 18, 2011. The Outlook meeting brings together analysts from various commodity sectors to discuss the outlook situation. For registration details or additional information for the Industry Outlook Meeting, see the Livestock and Marketing Information Center (LMIC) homepage at <http://www.lmic.info/> or contact Erica Rosa 303-236-0461 at rosa@lmic.info or Laura Lahr 303-236-0464 at lahr@lmic.info.